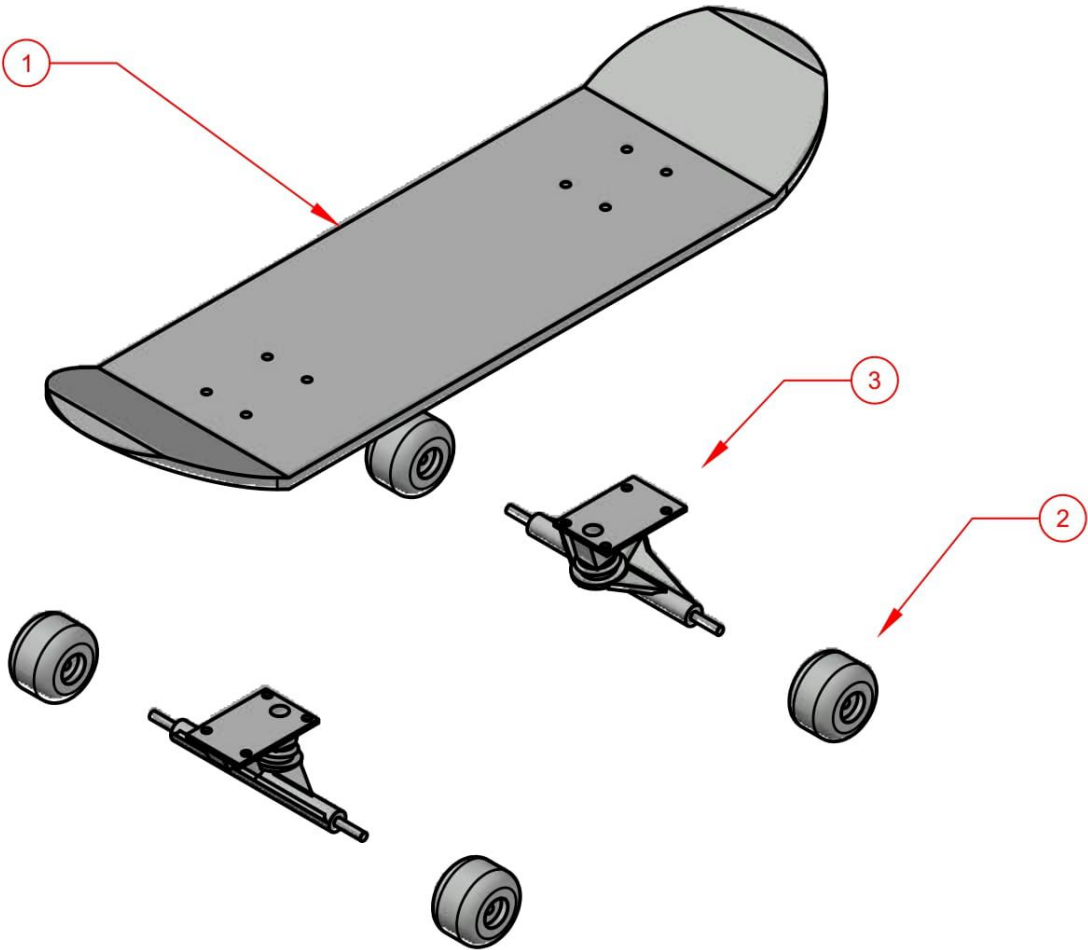


The University of Georgia, Athens, GA

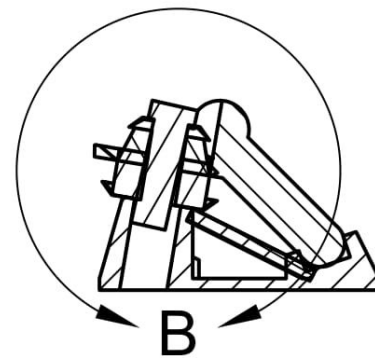
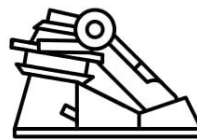
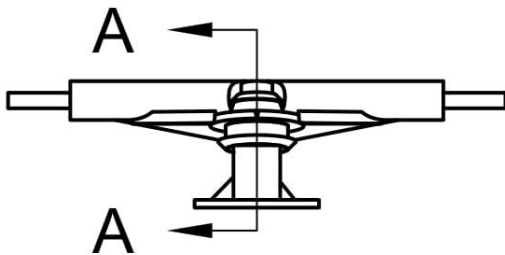
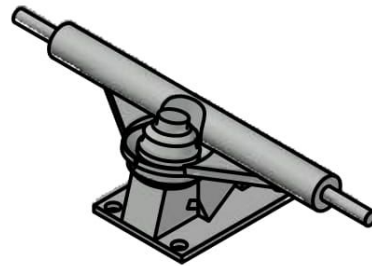
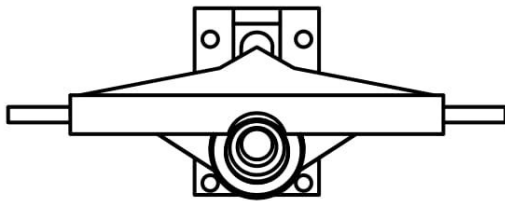
ALL DIMENSIONS ARE IN INCHES				Drawn By: LIAM KOZMA		Title: Skateboard Assembled	
TOLERANCES UNLESS OTHERWISE SPECIFIED:				Scale: 1:8	Date:12/11/2020	Part #:0	Sheet:1 of 12
x.x	±0.02						
x.xx	±0.01	FRACTIONAL	±1/32				
x.xxx	±0.005	ANGULAR	±0.5°				
x.xxxx	±0.0025						

PARTS LIST				
ITEM	PART NUMBER	QUANTITY	DESCRIPTION	MATERIAL
1	1	1	Board	Wood
2	2	4	Wheel	Polyurethane
3	3	2	Truck	See Page 4

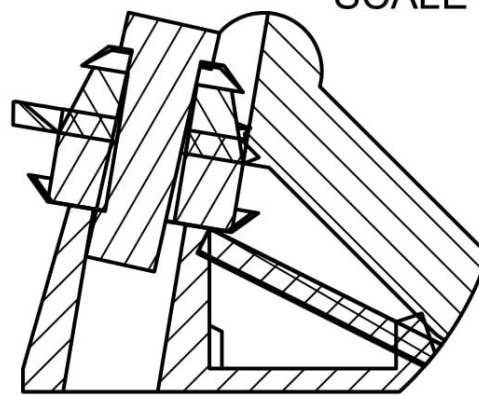
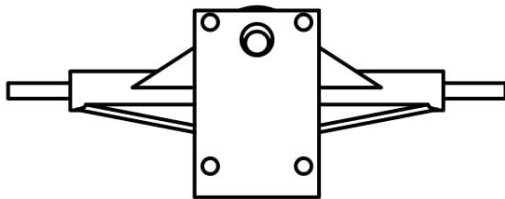


The University of Georgia, Athens, GA

ALL DIMENSIONS ARE IN INCHES				Drawn By: LIAM KOZMA		Title: Skateboard Exploded View	
TOLERANCES UNLESS OTHERWISE SPECIFIED:				Scale: NTS		Part #:0	
x.x	±0.02	FRACTIONAL	±1/32				
x.xx	±0.01		±0.5°				
x.xxx	±0.005	ANGULAR					
x.xxxx	±0.0025			Date:12/11/2020		Sheet:2 of 12	



SECTION A-A
SCALE 0.5000



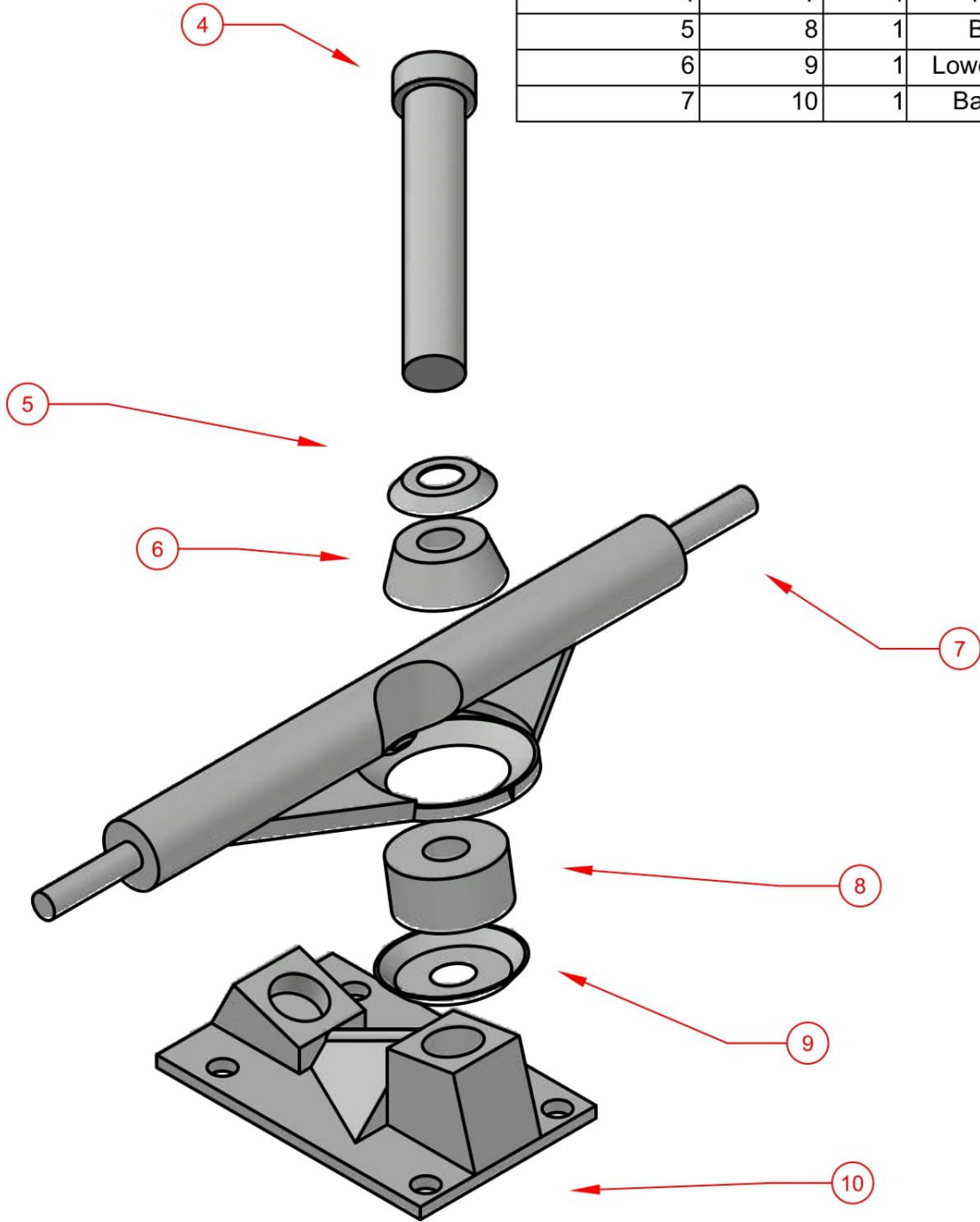
DETAIL B
SCALE 1:1

The University of Georgia, Athens, GA

ALL DIMENSIONS ARE IN INCHES				Drawn By: LIAM KOZMA		Title: Truck Assmbled	
TOLERANCES UNLESS OTHERWISE SPECIFIED:				Scale: 1:3	Date:12/11/2020	Part #:3	Sheet:3 of 12
x.x	±0.02						
x.xx	±0.01	FRACTIONAL	±1/32				
x.xxx	±0.005	ANGULAR	±0.5°				
x.xxxx	±0.0025						

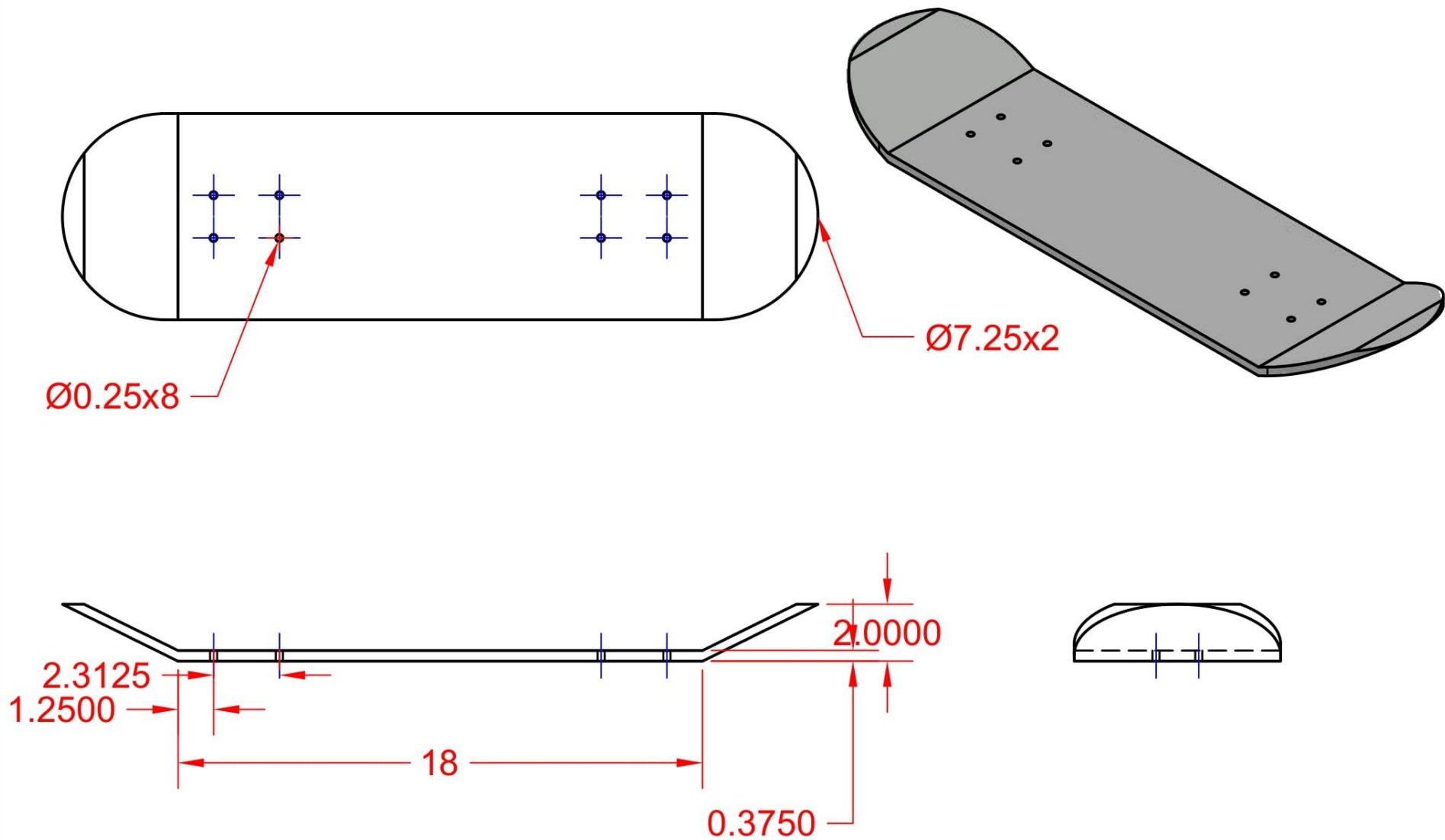
TRUCK PARTS LIST

ITEM	PART #	QTY	DESCRIPTION	MATERIAL
1	4	1	Kingpin	Silver
2	5	1	Top Washer	Urethane
3	6	1	Cone Bushing	Silver
4	7	1	Hanger	Steel
5	8	1	Bushing	Urethane
6	9	1	Lower Washer	Silver
7	10	1	Base Plate	Steel



The University of Georgia, Athens, GA

ALL DIMENSIONS ARE IN INCHES				Drawn By: LIAM KOZMA		Title: Truck Exploded View	
TOLERANCES UNLESS OTHERWISE SPECIFIED:				Scale: 1:1	Date:12/11/2020	Part #:3	Sheet:4 of 12
x.x	±0.02						
x.xx	±0.01	FRACTIONAL	±1/32				
x.xxx	±0.005	ANGULAR	±0.5°				
x.xxxx	±0.0025						



The University of Georgia, Athens, GA

ALL DIMENSIONS ARE IN INCHES			
TOLERANCES UNLESS OTHERWISE SPECIFIED:			
x.x	±0.02		
x.xx	±0.01	FRACTIONAL	±1/32
x.xxx	±0.005	ANGULAR	±0.5°
x.xxxx	±0.0025		

Drawn By: LIAM KOZMA

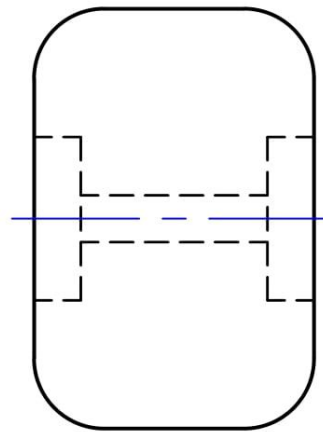
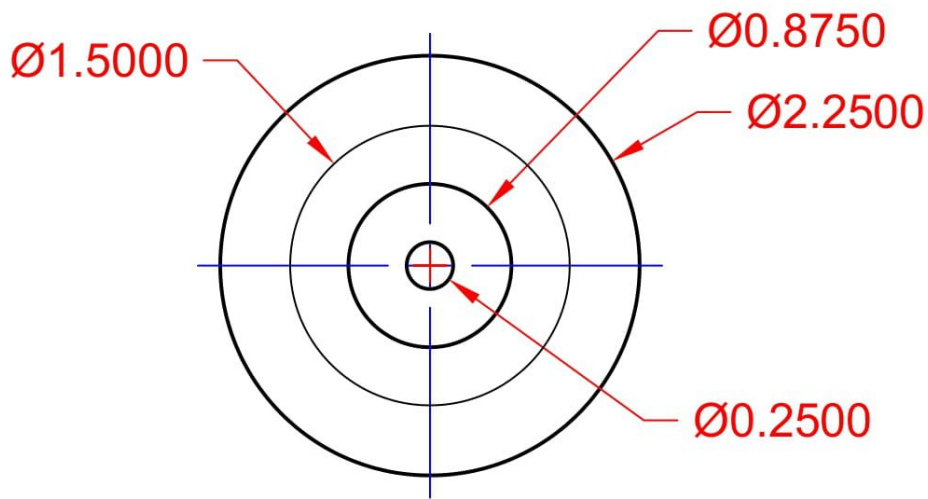
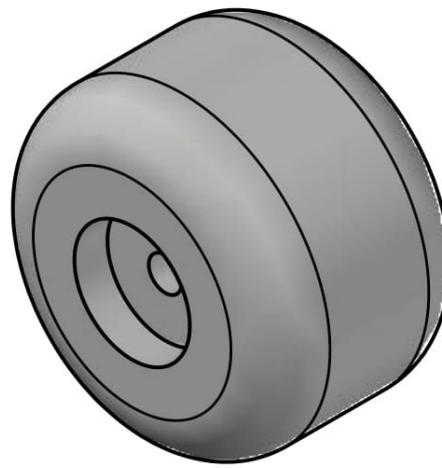
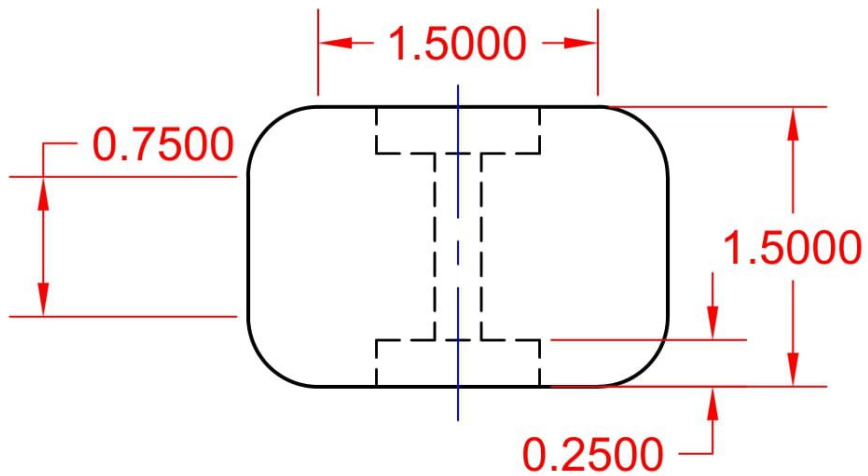
Title: Board

Scale: 1:5

Date:12/11/2020

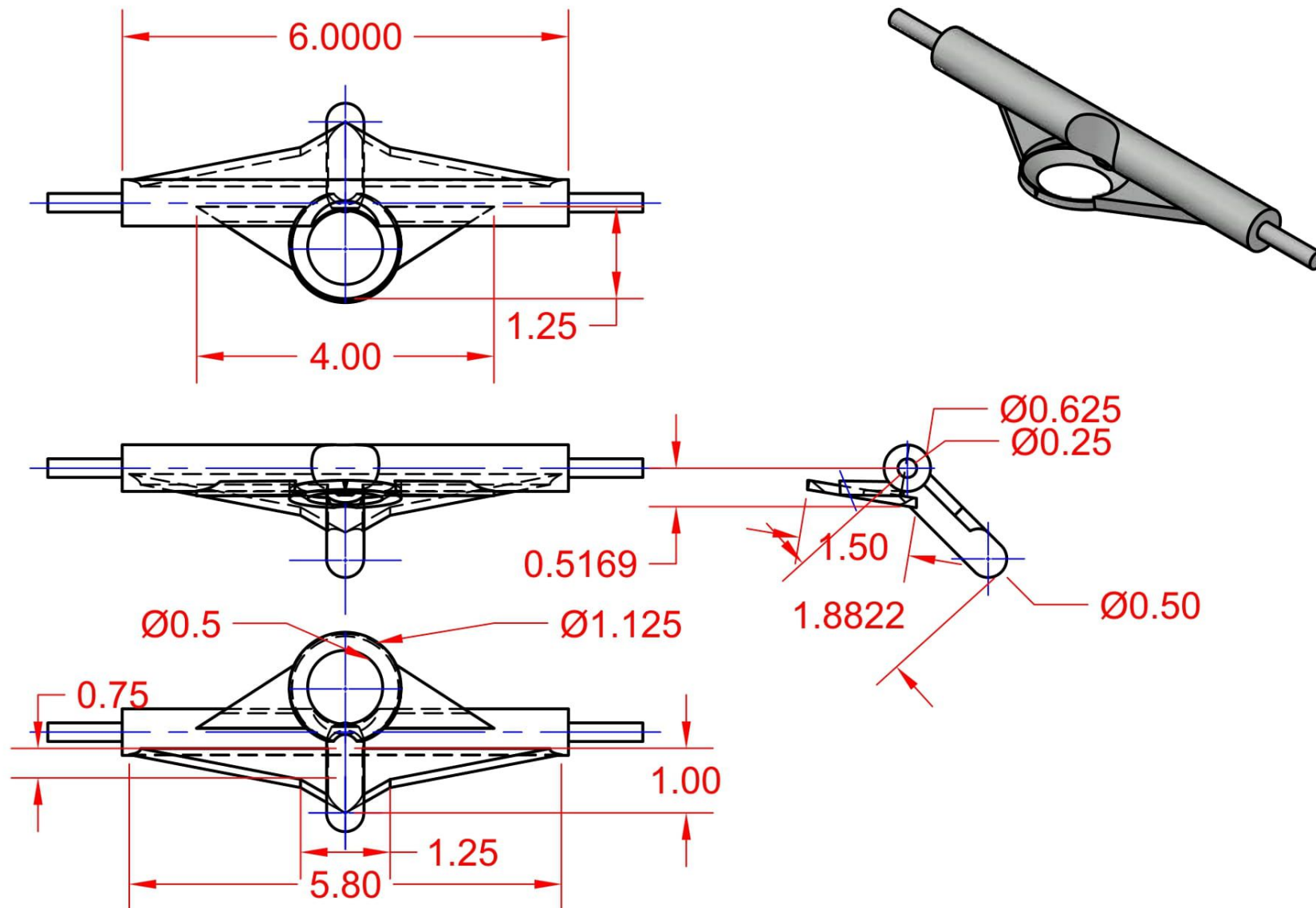
Part #: 1

Sheet:5 of 12



The University of Georgia, Athens, GA

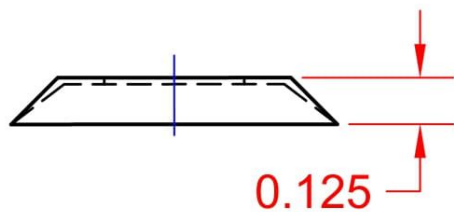
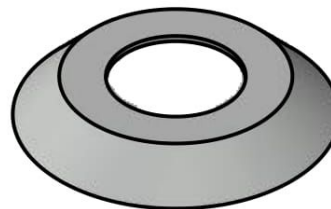
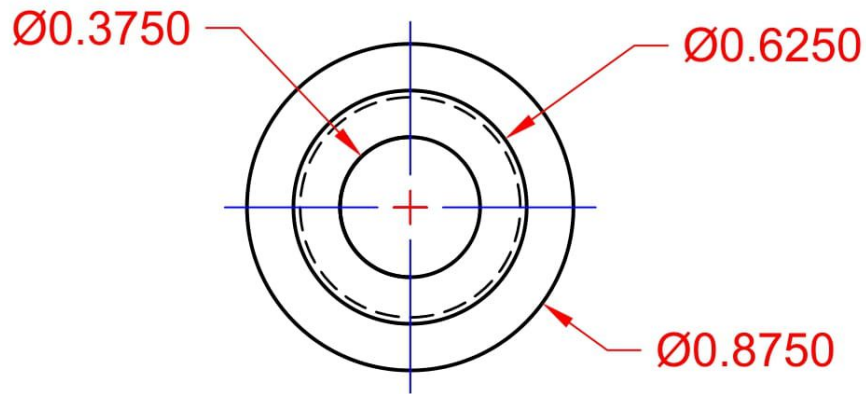
ALL DIMENSIONS ARE IN INCHES				Drawn By: LIAM KOZMA		Title: Wheel	
TOLERANCES UNLESS OTHERWISE SPECIFIED:				Scale: 1:1	Date:12/11/2020	Part #:2	Sheet:6 of 12
x.x	±0.02						
x.xx	±0.01	FRACTIONAL	±1/32				
x.xxx	±0.005	ANGULAR	±0.5°				
x.xxxx	±0.0025						



The University of Georgia, Athens, GA

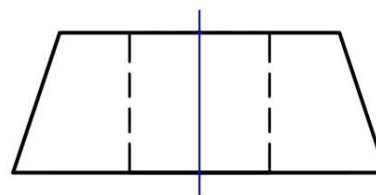
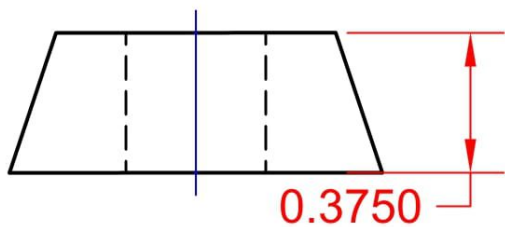
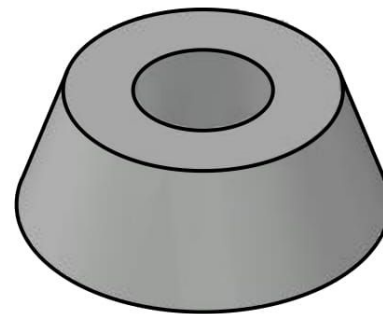
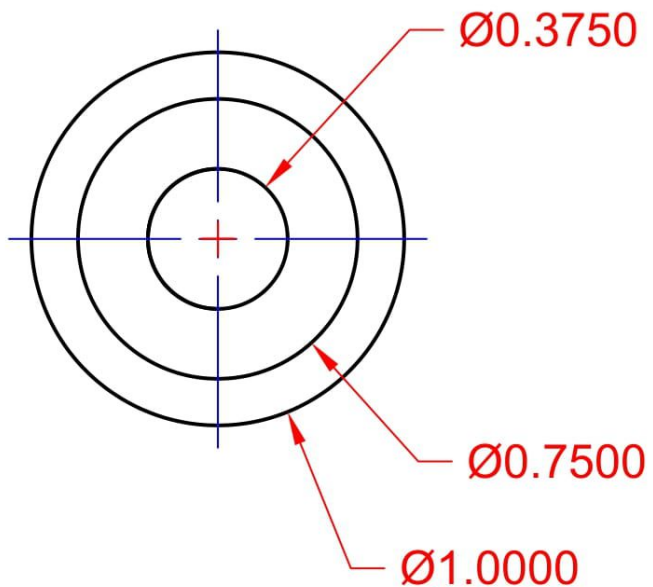
ALL DIMENSIONS ARE IN INCHES			
TOLERANCES UNLESS OTHERWISE SPECIFIED:			
x.x	±0.02		
x.xx	±0.01	FRACTIONAL	±1/32
x.xxx	±0.005	ANGULAR	±0.5°
x.xxxx	±0.0025		

Drawn By: LIAM KOZMA		Title: Hanger	
Scale: 1:2	Date: 12/11/2020	Part #: 7	Sheet: 7 of 12



The University of Georgia, Athens, GA

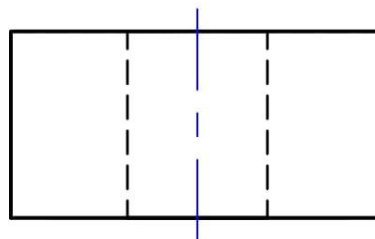
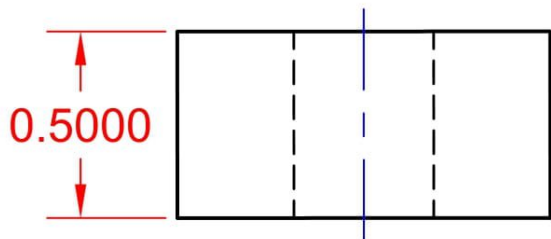
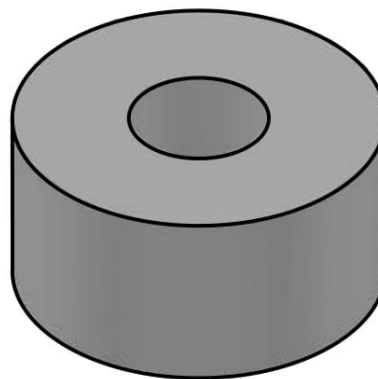
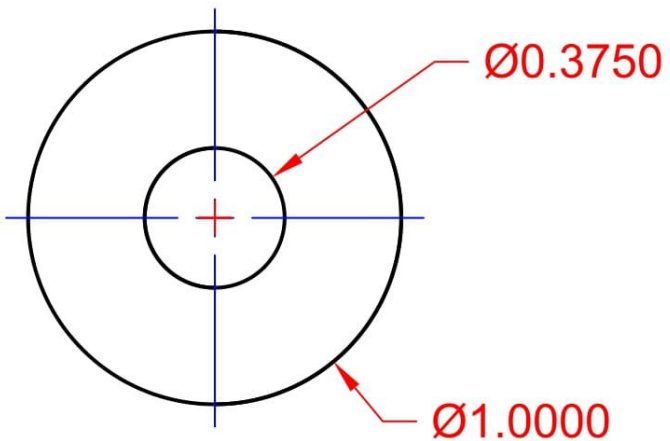
ALL DIMENSIONS ARE IN INCHES				Drawn By: LIAM KOZMA		Title: Top Washer	
TOLERANCES UNLESS OTHERWISE SPECIFIED:				Scale: 2:1	Date:12/11/2020	Part #:5	Sheet:8 of 12
x.x	±0.02						
x.xx	±0.01	FRACTIONAL	±1/32				
x.xxx	±0.005	ANGULAR	±0.5°				
x.xxxx	±0.0025						



The University of Georgia, Athens, GA

ALL DIMENSIONS ARE IN INCHES			
TOLERANCES UNLESS OTHERWISE SPECIFIED:			
x.x	±0.02		
x.xx	±0.01	FRACTIONAL	±1/32
x.xxx	±0.005	ANGULAR	±0.5°
x.xxxx	±0.0025		

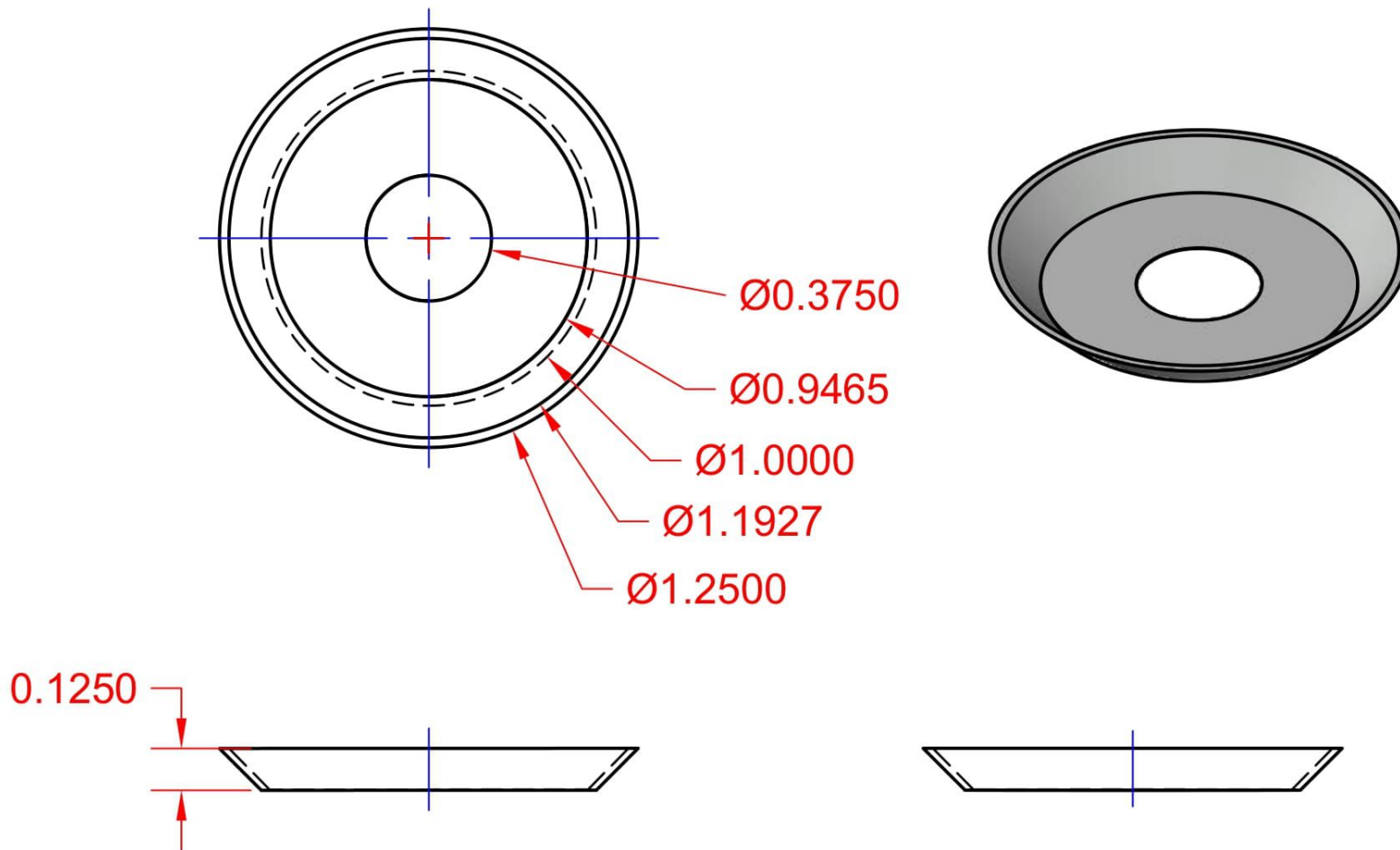
Drawn By: LIAM KOZMA		Title: Cone Bushing	
Scale: 2:1	Date: 12/11/2020	Part #: 6	Sheet: 9 of 12



The University of Georgia, Athens, GA

ALL DIMENSIONS ARE IN INCHES			
TOLERANCES UNLESS OTHERWISE SPECIFIED:			
x.x	±0.02		
x.xx	±0.01	FRACTIONAL	±1/32
x.xxx	±0.005	ANGULAR	±0.5°
x.xxxx	±0.0025		

Drawn By: LIAM KOZMA		Title: Bushing	
Scale: 2:1	Date: 12/11/2020	Part #: 8	Sheet: 10 of 12

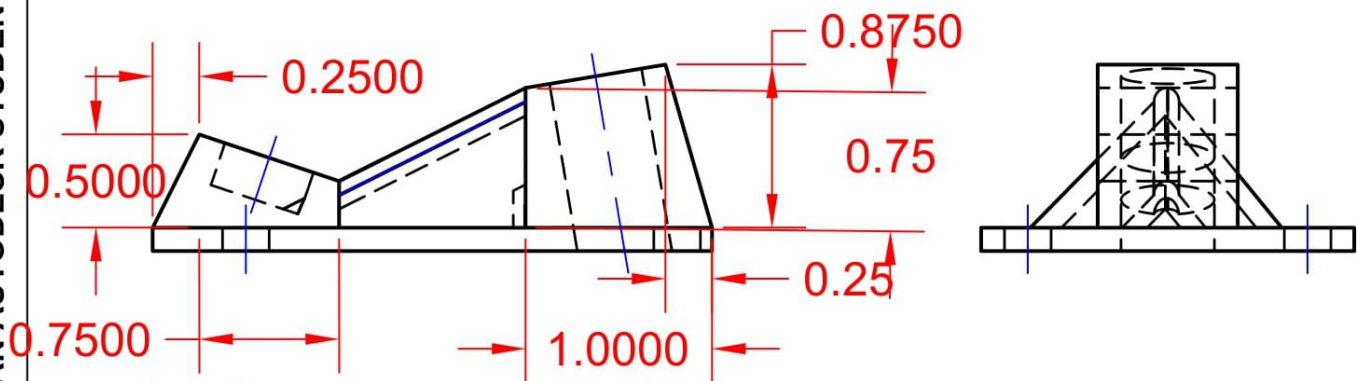
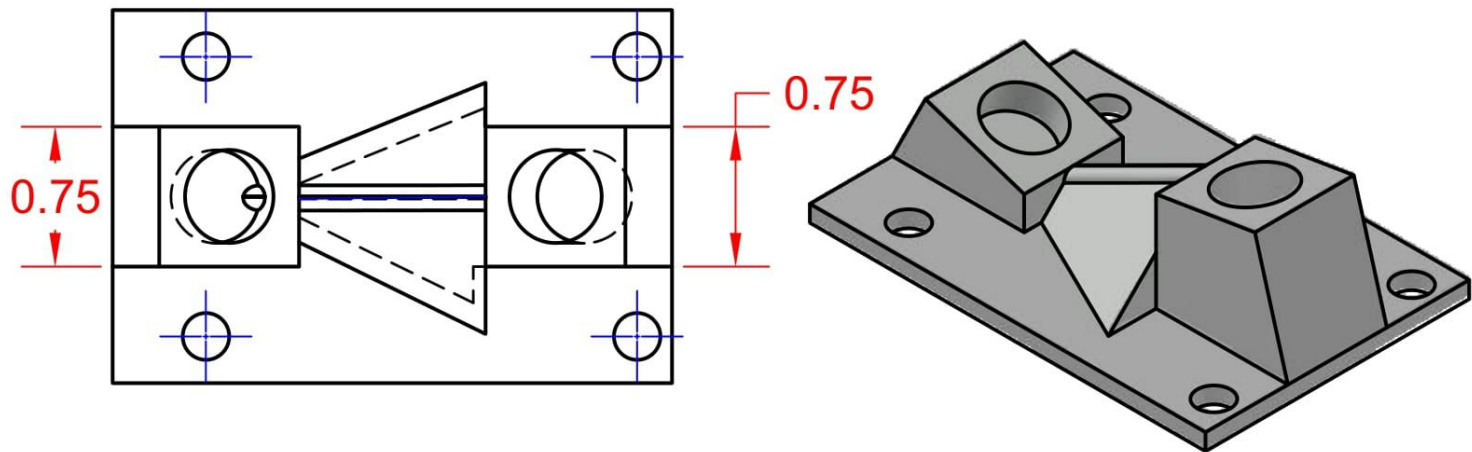


The University of Georgia, Athens, GA

ALL DIMENSIONS ARE IN INCHES				Drawn By: LIAM KOZMA		Title: Lower Washer	
TOLERANCES UNLESS OTHERWISE SPECIFIED:				Scale: 2:1		Part #:9	
x.x	±0.02			Date:12/11/2020		Sheet:11 of 12	
x.xx	±0.01	FRACTIONAL	±1/32				
x.xxx	±0.005	ANGULAR	±0.5°				
x.xxxx	±0.0025						

PRODUCED BY AN AUTODESK STUDENT VERSION

PRODUCED BY AN AUTODESK STUDENT VERSION



The University of Georgia, Athens, GA

ALL DIMENSIONS ARE IN INCHES				Drawn By: LIAM KOZMA		Title: Truck Exploded View	
TOLERANCES UNLESS OTHERWISE SPECIFIED:				Scale: 1:1		Date:12/11/2020	
x.x	±0.02	FRACTIONAL ANGULAR	±1/32	Part #:10		Sheet:12 of 12	
x.xx	±0.01		±0.5°				
x.xxx	±0.005						
x.xxxx	±0.0025						